



Quality Products & Sales Inc

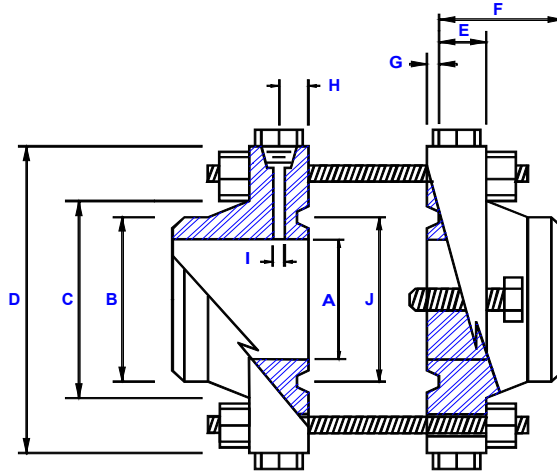
Orifice Metering Division

PO Box 7

Broken Arrow Ok 74013

Local #(918) 251-0115 * Watts #(800) 444-4634 * Fax #(918) 455-1982

300# RTJWN ORIFICE FLANGE UNION



PIPE SIZE	(A) BORE	POINT OF WELD	HUB AT BASE	OUTER DIAMETER	MINIMUM FLANGE THICKNESS	OVERALL LENGTH NOTE#1	DEPTH OF RING GROOVE	TAP CENTER TO PLATE FACE	PRESSURE TAP HOLE SIZE	PITCH DIAMETER OF GROOVE	DIAMETER OF BOLT CIRCLE	DIAMETER OF HOLES	NUMBER OF HOLES	SIZE OF STUDS	SIZE OF JACKSCREWS	APPROXIMATE WEIGHT
	A	B	C	D	E	F	G	H	I	J						
1/2	.622	3.75	.84	3.75	1.25	2.75	.218	1.00	.250	1.344	2.62	.562	4	1/2 X 5-1/4	1/2 X 4	10
3/4	.824	4.62	1.05	4.62	1.25	2.87	.250	1.00	.250	1.687	3.25	.687	4	5/8 X 5-1/2	1/2 X 4	10
1	1.049	4.87	1.32	4.87	1.25	3.00	.250	1.00	.250	2.000	3.50	.687	4	5/8 X 5-1/2	5/8 X 4	15
1-1/2	1.610	6.12	1.90	6.12	1.25	3.12	.250	1.00	.250	2.687	4.50	.812	4	3/4 X 5-3/4	5/8 X 4	25
2	2.067	6.50	2.38	6.50	1.25	3.12	.312	1.00	.375	3.250	5.00	.687	8	5/8 X 5-1/2	5/8 X 4	30
2-1/2	2.469	7.50	2.88	7.50	1.25	3.25	.312	1.00	.375	4.000	5.87	.812	8	3/4 X 5-3/4	5/8 X 4	46
3	3.068	8.25	3.50	8.25	1.25	3.25	.312	1.00	.375	4.875	6.62	.812	8	3/4 X 5-3/4	3/4 X 4	56
4	4.026	10.00	4.50	10.00	1.25	3.37	.312	1.00	.500	5.875	7.87	.812	8	3/4 X 5-3/4	3/4 X 4	65
6	6.065	12.50	6.63	12.50	1.43	3.87	.312	1.00	.500	8.312	10.62	.875	12	3/4 X 6-1/4	3/4 X 4	107
8	7.981	15.00	8.63	15.00	1.62	4.37	.312	1.00	.500	10.62	13.00	1.00	12	7/8 X 6-3/4	3/4 X 4	169
10	10.020	17.50	10.75	17.50	1.87	4.62	.312	1.00	.500	12.75	15.25	1.12	16	1 X 7-1/2	3/4 X 4	250
12	12.000	20.50	12.75	20.50	2.00	5.12	.312	1.00	.500	15.00	17.75	1.25	16	1-1/8 X 8-1/2	3/4 X 4	365
14	13.250	23.00	14.00	23.00	2.12	5.62	.312	1.00	.500	16.50	20.25	1.25	20	1-1/8 X 8-1/2	1 X 5-1/2	490
16	15.250	25.50	16.00	25.50	2.25	5.75	.312	1.00	.500	18.50	22.50	1.37	20	1-1/4 X 9-1/2	1 X 5-1/2	640
18	17.250	28.00	18.00	28.00	2.37	6.25	.312	1.00	.500	21.00	24.75	1.37	24	1-1/4 X 9-1/2	1 X 5-1/2	785
20	19.250	30.50	20.00	30.50	2.50	6.37	.375	1.00	.500	23.00	27.00	1.37	24	1-1/4 X 9-1/2	1 X 5-1/2	960
24	23.250	36.00	24.00	36.00	2.75	6.62	.437	1.00	.500	27.25	32.00	1.62	24	1-1/2 X 10-1/2	1 X 5-1/2	1410

NOTE #1 Overall length does not include depth of Ring Groove

MATERIALS: Domestic A105 (C.S.) AND A182 (S.S.)

Other materials and schedules available

HARDWARE:

Stud Bolts: A193 Gr. B7 Steel

Hex Nuts: A194 Gr. 2H Steel

Jackscrew: C1018 Hardened Square Head Screws

Pipe Plugs: Hex Head, Forged Steel

Manufactured to meet

A.G.A Report #3

A.P.I 14.3

ASME SPECIFICATIONS

RTJ Orifice Plates sold separate