



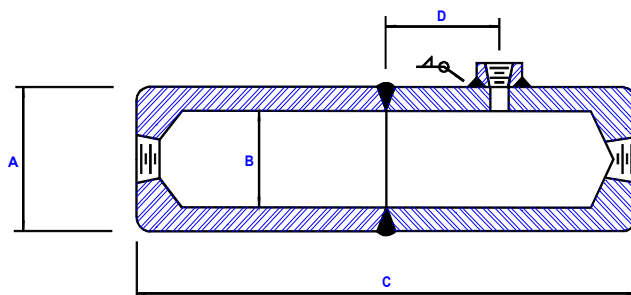
*Quality Products & Sales Inc*  
*Orifice Metering Division*

PO Box 7

Broken Arrow Ok 74013

Local #(918) 251-0115 \* Watts #(800) 444-4634 \* Fax #(918) 455-1982

**CONDENSATE CHAMBERS**



PIPE SIZE	OUTER DIAMETER	S/40	S/80	S/XXH	OVERALL LENGTH	SIDE CONNECTION LOCATION	STANDARD PRESSURE CONNECTIONS	OPTIONAL PRESSURE CONNECTIONS
	<b>A</b>	<b>( B ) INSIDE DIA.</b>			<b>C</b>	<b>D</b>		
2	2.375	2.067	1.939	1.503	8.00	1.75	1/2" FNP	1/4"-1"
3	3.500	3.068	2.900	2.300	11.00	2.00	1/2" FNP	1/4"-1"
4	4.500	4.026	3.826	3.152	14.00	3.00	1/2" FNP	1/4"-1"
6	6.625	6.065	5.761	4.897	17.00	3.00	1/2" FNP	1/4"-1"

3000# Connections for S/40 and S/80

6000# Connections for S/XXH

**MATERIALS:** CARBON STEEL, STAINLESS STEEL, MONEL, HASTELLOY, CHROMOLY

*Other materials and styles available*

**FABRICATED PER:** ASME B31.1 AND B31.3 Specifications

