



Quality Products & Sales Inc

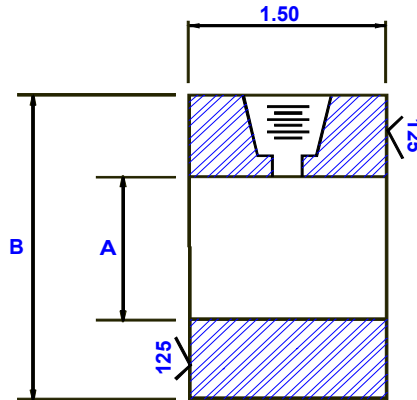
Orifice Metering Division

PO Box 7

Broken Arrow Ok 74013

Local #(918) 251-0115 * Watts #(800) 444-4634 * Fax #(918) 455-1982

RAISED FACE BLEED RINGS



PIPE SIZE	(A) BORE	150# FLANGE RATING	300# FLANGE RATING	600# FLANGE RATING	900# FLANGE RATING	1500# FLANGE RATING	150# FLANGE RATING	300# FLANGE RATING	600# FLANGE RATING	900# FLANGE RATING	1500# FLANGE RATING
	A	(B) OUTER DIAMETER					ESTIMATED WEIGHT (lbs)				
1	1.125	2.50	2.75	2.75	3.00	3.00	2	2	2	3	3
1-1/2	1.625	3.25	3.625	3.625	3.75	3.75	3	3	3	4	4
2	2.125	4.00	4.25	4.25	5.50	5.50	4	5	5	9	9
2-1/2	2.500	4.75	5.00	5.00	6.375	6.375	5	6	6	11	11
3	3.125	5.25	5.75	5.75	6.50	6.375	6	8	8	11	12
4	4.125	6.75	7.00	7.50	8.00	8.125	9	11	13	16	16
6	6.125	8.625	9.75	10.375	11.25	11.00	12	19	23	30	28
8	8.00	10.875	12.00	12.50	14.00	13.75	18	27	31	44	42
10	10.125	13.250	14.125	15.625	17.00	17.00	24	32	47	62	62
12	12.000	16.00	16.50	17.75	19.375	20.25	37	43	57	77	89

MATERIALS: ASTM A36, A516-70, A240-304, 316, MONEL, HASTELLOY, CHROMOLY

Other materials and styles available

PRESSURE CONNECTIONS

1/2" FNPT OR SOCKET-WELD

3/4" FNPT OR SOCKET-WELD

RTJ Bleed rings available upon request