



Quality Products & Sales Inc

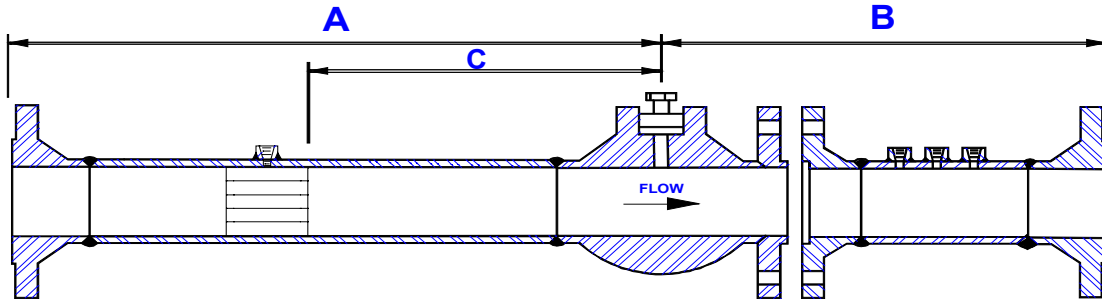
Orifice Metering Division

PO Box 7

Broken Arrow Ok 74013

Local #(918) 251-0115 * Watts #(800) 444-4634 * Fax #(918) 455-1982

A.G.A. Single Chamber Fitting Meter Tube



PIPE SIZE	UPSTREAM LENGTH WITH STRAIGHTENING VANE	UPSTREAM LENGTH WITHOUT STRAIGHTENING VANE	UPSTREAM LENGTH WITH FLOW CONDITIONER OR PROFILER	DOWNSTREAM LENGTH	STRAIGHTENING VANE LOCATION	CONDITIONER OR PROFILER LOCATION	STANDARD DOWNSTREAM BRANCH CONNECTIONS
	A	A*	A+	B	C	C+	3000# THRD
2	60.0"	90.0"	30.0"	36.0"	26-7/8"	16-3/4"	(2) 3/4" (1) 1/2"
3	90.0"	138.0"	42.0"	48.0"	39-7/8"	24-3/4"	(2) 3/4" (1) 1/2"
4	120.0"	180.0"	54.0"	48.0"	52-3/8"	32-1/4"	(2) 3/4" (1) 1/2"
6	180.0"	270.0"	84.0"	60.0"	78-7/8"	48-3/4"	(2) 3/4" (1) 1/2"
8	234.0"	354.0"	108.0"	60.0"	103-3/4"	63-7/8"	(2) 3/4" (1) 1/2"
10	294.0"	444.0"	132.0"	72.0"	130-1/4"	80-1/4"	(2) 3/4" (1) 1/2"
12	348.0"	528.0"	156.0"	78.0"	156.0"	95-1/2"	(2) 3/4" (1) 1/2"

Above length are based on schedule 40 pipe

MATERIALS: Carbon Steel, Stainless Steel, Chromoly

Other materials, sizes and styles available

OPTIONAL PRESSURE CONNECTIONS

1/2" 3000# OR 6000# FNPT OR SOCKET-WELD
 3/4" 3000# OR 6000# FNPT OR SOCKET-WELD
 1" 3000# OR 6000# FNPT OR SOCKET-WELD

DESIGNED PER: A.G.A Report #3 (Fourth Edition)

A.P.I. 14.3

ASME Specifications

INSPECTION PER: ASME B31.1

ASME B31.3

A.P.I 1104

Orifice Plates Sold Separate

OPTIONAL END CONNECTIONS:

Beveled Ends
 Flanged
 Threaded
 Concentric & Eccentric Reducer
 Elbow

TESTING AVAILABLE

Radiograph
 Liquid Dye Penetrant
 Hydro-test
 Magnetic Partical
 Ultra-sound
 Positive Material Inspection
 Eccentricity Test
 Surface Finish Test