



# Quality Products & Sales Inc

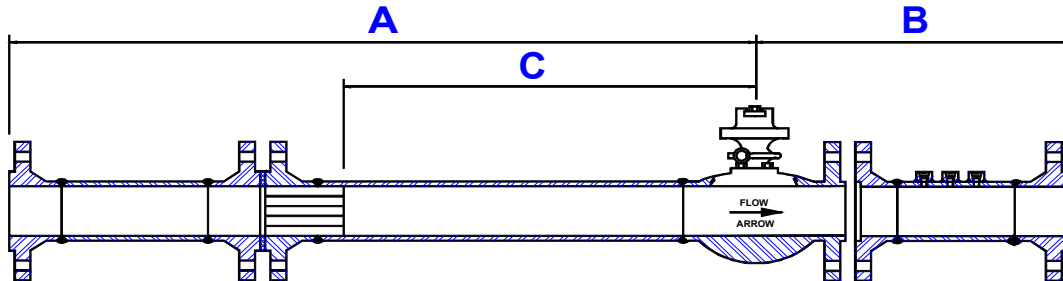
## Orifice Metering Division

PO Box 7

Broken Arrow Ok 74013

Local #(918) 251-0115 \* Watts #(800) 444-4634 \* Fax #(918) 455-1982

### A.G.A. Three Stage Meter Tube



Available in Dual and Single Chamber fittings, as well as Orifice Flange

PIPE SIZE	UPSTREAM LENGTH WITH STRAIGHTENING VANE	UPSTREAM LENGTH WITHOUT STRAIGHTENING VANE	UPSTREAM LENGTH WITH FLOW CONDITIONER OR PROFILER	DOWNSTREAM LENGTH	STRAIGHTENING VANE LOCATION	CONDITIONER OR PROFILER LOCATION	STANDARD DOWNSTREAM BRANCH CONNECTIONS
	A	A*	A+	B	C	C+	3000# THRD
2	60.0"	90.0"	30.0"	36.0"	26-7/8"	16-3/4"	(2) 3/4" (1) 1/2"
3	90.0"	138.0"	42.0"	48.0"	39-7/8"	24-3/4"	(2) 3/4" (1) 1/2"
4	120.0"	180.0"	54.0"	48.0"	52-3/8"	32-1/4"	(2) 3/4" (1) 1/2"
6	180.0"	270.0"	84.0"	60.0"	78-7/8"	48-3/4"	(2) 3/4" (1) 1/2"
8	234.0"	354.0"	108.0"	60.0"	103-3/4"	63-7/8"	(2) 3/4" (1) 1/2"
10	294.0"	444.0"	132.0"	72.0"	130-1/4"	80-1/4"	(2) 3/4" (1) 1/2"
12	348.0"	528.0"	156.0"	78.0"	156.0"	95-1/2"	(2) 3/4" (1) 1/2"

Above length are based on schedule 40 pipe

**MATERIALS:** Carbon Steel, Stainless Steel, Chromoly

*Other materials, sizes and styles available*

#### OPTIONAL PRESSURE CONNECTIONS

1/2" 3000# OR 6000# FNPT OR SOCKET-WELD

3/4" 3000# OR 6000# FNPT OR SOCKET-WELD

1" 3000# OR 6000# FNPT OR SOCKET-WELD

#### OPTIONAL END CONNECTIONS:

Beveled Ends

Flanged

Threaded

Concentric & Eccentric Reducer

Elbow

**DESIGNED PER:** A.G.A Report #3 (Fourth Edition)

A.P.I. 14.3

ASME Specifications

**INSPECTION PER:** ASME B31.1

ASME B31.3

A.P.I 1104

#### TESTING AVAILABLE

Radiograph

Liquid Dye Penetrant

Hydro-test

Magnetic Partical

Ultra-sound

Positive Material Inspection

Eccentricity Test

Surface Finish Test

*Orifice Plates Sold Separate*