



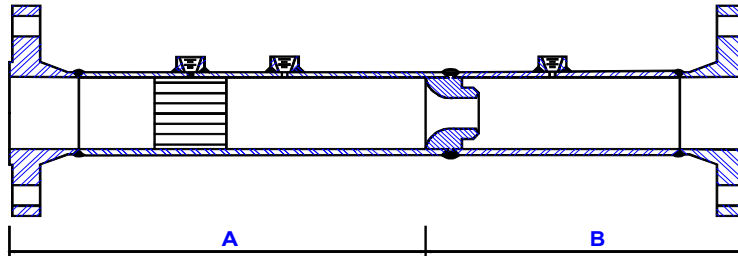
Quality Products & Sales Inc
Orifice Metering Division

PO Box 7

Broken Arrow Ok 74013

Local #(918) 251-0115 * Watts #(800) 444-4634 * Fax #(918) 455-1982

A.S.M.E. Weld-In Flow Nozzle Tube



PIPE SIZE	PIPE INSIDE DIAMETER	BETA RATIO	THROAT DIAMETER	ESTIMATED NOZZLE LENGTH (INCHES)	RECOMMENDED UPSTREAM PIPE LENGTH (INCHES)	RECOMMENDED DOWNSTREAM PIPE LENGTH (INCHES)	STANDARD PRESSURE TAP	(12) POINT WEIGHT CALIBRATED ACCURACY	UNCALIBRATED ACCURACY
	NOTE #1				NOTE #2				
2	2.067	.50	1.034 +-.0005	1.696	21.0	9.0	(2) 1/2" FNPT	1/4 OF 1%	3/4 OF 1%
		.60	1.240 +-.0006	1.811	23.0	9.0			
		.75	1.550 +-.0007	1.983	25.0	9.0			
2-1/2	2.469	.50	1.235 +-.0006	2.009	25.0	10.0	(2) 1/2" FNPT	1/4 OF 1%	3/4 OF 1%
		.60	1.481 +-.0007	2.146	28.0	10.0			
		.75	1.851 +-.0009	2.352	30.0	10.0			
3	3.068	.50	1.534 +-.0007	2.475	31.0	13.0	(2) 1/2" FNPT	1/4 OF 1%	3/4 OF 1%
		.60	1.841 +-.0009	2.646	34.0	13.0			
		.75	2.301 +-.001	2.901	37.0	13.0			
4	4.026	.50	2.013 +-.001	3.220	41.0	17.0	(2) 1/2" FNPT	1/4 OF 1%	3/4 OF 1%
		.60	2.415 +-.0012	3.444	45.0	17.0			
		.75	3.019 +-.0015	3.779	49.0	17.0			
6	6.065	.50	3.032 +-.0015	4.806	61.0	25.0	(2) 1/2" FNPT	1/4 OF 1%	3/4 OF 1%
		.60	3.639 +-.0017	5.144	67.0	25.0			
		.75	4.548 +-.0022	5.649	73.0	25.0			
8	7.981	.50	3.990 +-.0018	6.297	80.0	32.0	(2) 1/2" FNPT	1/4 OF 1%	3/4 OF 1%
		.60	4.788 +-.0023	6.740	88.0	32.0			
		.75	5.985 +-.0028	7.406	96.0	32.0			
10	10.020	.50	5.010 +-.0025	7.883	101.0	40.0	(2) 1/2" FNPT	1/4 OF 1%	3/4 OF 1%
		.60	6.012 +-.003	50-1/2	111.0	40.0			
		.75	7.515 +-.0037	42-1/4	121.0	40.0			
12	12.000	.50	6.000 +-.003	9.424	120.0	48.0	(2) 1/2" FNPT	1/4 OF 1%	3/4 OF 1%
		.60	7.200 +-.0036	10.091	132.0	48.0			
		.75	9.000 +-.0045	11.091	144.0	48.0			
14	13.250	.50	6.625 +-.0033	10.396	133.0	53.0	(2) 1/2" FNPT	1/4 OF 1%	3/4 OF 1%
		.60	7.950 +-.0039	11.133	146.0	53.0			
		.75	9.937 +-.0049	12.237	159.0	53.0			

NOTE #1: Other pipe schedules and beta ratios are standardly available.

NOTE #2: Recommended pipe lengths are based on ASME Fluid Metering 6th. Edition Fig. II-II-I

MATERIALS: Carbon Steel, Stainless Steel, Chromoly, Monel, Hastelloy, PVC, Teflon

END STYLES: Beveled, Flanged, Threaded

Calculations available using equations

ASME MFC-3M

ISO 5167

Fabrication Codes: ASME B31.1 & B31.3

Other material & styles available

Flow Nozzles Can be Purchased Separate